

Cylindrical Stainless Steel Weights

Simple, Quick, and Precise Testing



Top Quality

METTLER TOLEDO puts the highest demands on the quality of its products. Each step in production is strictly controlled, from the original steel billet to the finished weight.



Simple Handling

Straightforward crane attachment assures quick and efficient weight handling for all applications. No special handling tools are required: the weights connect directly to the most commonly-used cranes.



Impeccable Finish

A mirror-polished surface makes the weights easy to clean and provides the best possible corrosion resistance. This ensures near-perfect stability over the weight's entire life span.

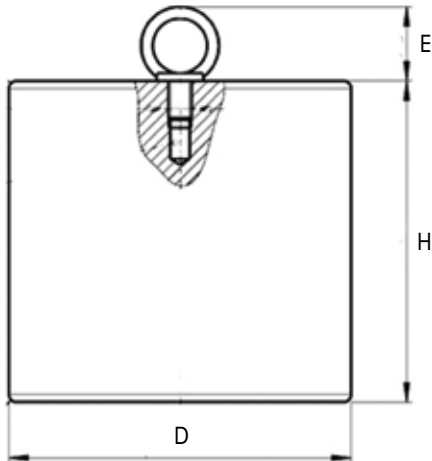


The Classic Test Method For Reliable Mass Determination

METTLER TOLEDO's heavy-capacity cylindrical weights are available in nominal values from 100 kg to 2000 kg, satisfying the maximum permissible error standards for OIML classes F1 and F2.

These classic cylindrical weights are easy to handle, with an eye bolt in the center for lifting. This arrangement is ideal for users who do not need to stack weights for different mass combinations. A preferred solution for calibration laboratories and all industries which require non-porous and wash-down capable test equipment.

Economical Testing with METTLER TOLEDO Weights



Technical Specification

Tolerance	OIML cl. F ₁ , F ₂ (acc. to OIML R111-1:2004)
Material weight	Stainless Steel
Density ρ	7950 kg/m ³ \pm 140 kg/m ³
Susceptibility χ	< 0.2
Polarization $\mu_0 M$	< 25 μ T
Surface	High gloss finish
Design	Adjusting cavity

Stainless Steel Cylindrical Weights F₁

Delivered in aluminum box

Order Number*	Nominal Value	MPE OIML cl. F ₁ ($\pm \delta m$ in mg)	Height (mm)	Eyebolt (mm)	Diameter (mm)
30030627	100 kg	\pm 500 mg	272	95	240
30030628	200 kg	\pm 1000 mg	376	95	290
30021218	500 kg	\pm 2500 mg	412	95	440
30030629	1000 kg	\pm 5000 mg	666	95	490
30030640	2000 kg	\pm 10000 mg	919	95	590

Stainless Steel Cylindrical Weights F₂

Delivered in aluminum box

Order Number*	Nominal Value	MPE OIML cl. F ₂ ($\pm \delta m$ in mg)	Height (mm)	Eyebolt (mm)	Diameter (mm)
30030641	100 kg	\pm 1600 mg	272	95	240
30030642	200 kg	\pm 3000 mg	376	95	290
30030644	500 kg	\pm 8000 mg	412	95	440
30030683	1000 kg	\pm 16000 mg	666	95	490
30030684	2000 kg	\pm 30000 mg	919	95	590

*Please contact your local dealer for order numbers incl. calibration certificates

Accessories

Order Number	Description	Specification
72001	Leather gloves	Size L
11123098	Nylon gloves	Size XL
11125600	Lifting straps	1 m
11125602	Lifting straps	3 m

For quotes or technical information regarding weights please use this email address:

weights@mt.com



Mettler-Toledo AG

Laboratory & Weighing Technologies
CH-8606 Greifensee
Tel. +41 44 944 2211
Fax +41 44 944 3170

Subject to technical changes
© 03/2013 Mettler-Toledo AG
Printed in Switzerland 30083747
Global MarCom Switzerland

www.mt.com/industrial-weights

For more information

